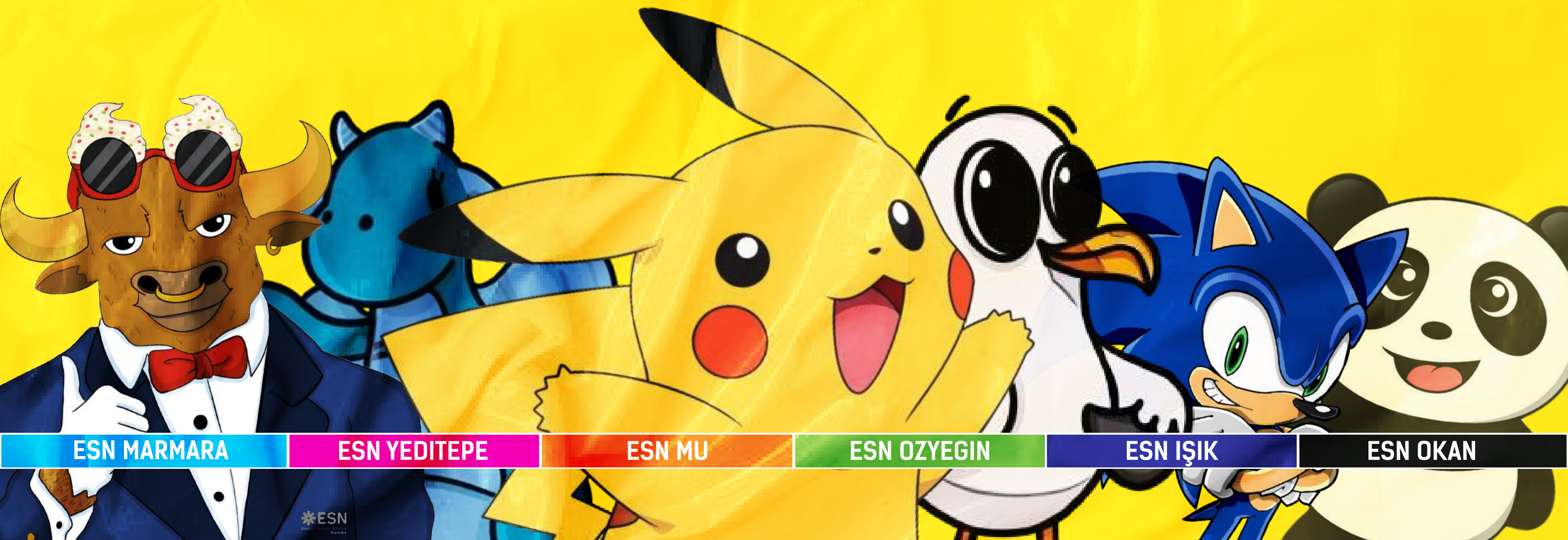




SECTION
PRESIDENTS
MEETING *
MALTEPE

SURVIVAL GUIDE



ESN MARMARA

ESN YEDITEPE

ESN MU

ESN OZYEGIN

ESN IŞIK

ESN OKAN

ESN



SECTION
PRESIDENTS
MEETING
MALTEPE



SPM MALTEPE 24'

Dear participant,

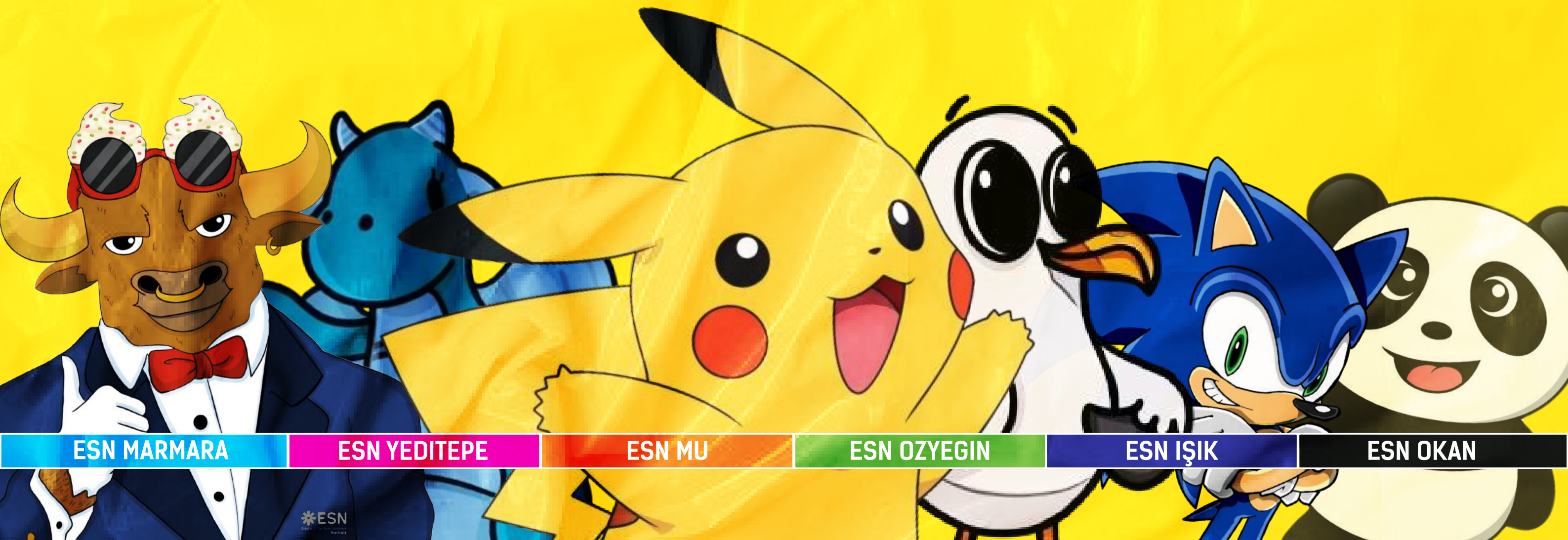
On behalf of the Organising Committee, we would like to warmly welcome you to ESN Türkiye's Section Presidents' Meeting Maltepe. Let's gather in Maltepe University to support each other, share our best practices, and pave the way for our network's growth. Your presence and contributions mean the world to us.

On the following pages, you will find everything that will come in handy during your time here.

Let's make SPM Maltepe a memorable one, filled with learning, laughter, and connections. These next couple days will be MUch more than a meeting!

Sincerely,

Organising Committee of SPM Maltepe 24



ESN MARMARA

ESN YEDITEPE

ESN MU

ESN OZYEGIN

ESN IŞIK

ESN OKAN

ESN



SECTION
PRESIDENTS
MEETING
MALTEPE



MEET THE OC



Damla Yorulmaz
Head Of OC



Ceren Dilber
Vice Head Of OC



Wajih Demashkieh
OC



Ceyda Mucan
Vice Head of OC (FORMER)



Serkan Erol
Head Of Finance



İbrahim Yılmaz
Finance



Ali Emre İşcan
OC



Mert Alaçam
PR



Mehmet İnce
Head Of PR (FORMER)



Selin Halcioğlu
PR (FORMER)



Mert Çelikaslan
Head of PR



Merit Gültekin
PR

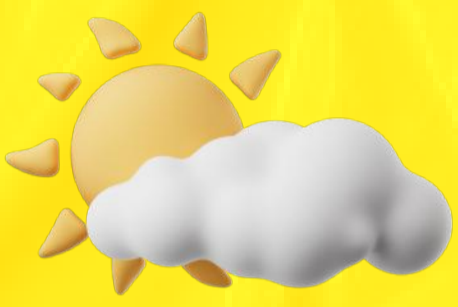
M E E T O C



SECTION
PRESIDENTS
MEETING
MALTEPE



WEATHER



Feb. 8

Sunny

11 °

4 °



Feb. 9

Partly Cloudy

12 °

4 °



Feb. 10

Sunny

12 °

6 °

Dear participants, it should not be forgotten that the location of the event is located in a **forested area** and is located outside of Istanbul, for this reason, we may see **-3,-5 degrees** less than the specified degrees, **it is useful to dress tightly.**

V E A T H E



SECTION
PRESIDENTS
MEETING
MALTEPE



FOOD



Breakfast

will take place from
07:00 until 09:00 at the
Marma Hotel

Lunch

will be provided by our
sponsors at the **Afife
jale Conference Hall**

Dinner

will take place from
20.00 until **21.00** at the
MarmaHotel

Please let us know if you have
specific dietary restrictions
BEFORE THE EVENT so that we can
accommodate your request
(vegetarian, vegan, kosher, etc.)



E
O O D S



SECTION
PRESIDENTS
MEETING
MALTEPE



EVENTS

To make these next days much more than a meeting, We've got some exciting events lined up.

Friday night,

We're throwing a themed party that promises to be an absolute blast.

What is the theme? **POP CULTURE!** Dress up as your favorite celebrity, movie character, or meme. If you end up with the same costume as someone else, you can recreate the Spider-Man meme.



Saturday night,

We have something **secret coming up**, we won't tell you about it yet ;)

Be sure to keep your eyes peeled for clues throughout the sessions



E
V
E



T
S

N



SECTION
PRESIDENTS
MEETING
MALTEPE



TRANSPORTATION

For those coming from the European side

For those coming from the European side(Karşı) via Marmaray, transfer to the M4 metro line at Ayrılıkçeşmesi station, and upon reaching Maltepe station, exit from gate number 3. From there, you can either take a shuttle bus or a taxi to continue on the same route.



For those arriving by Metrobüs,

Get off at Uzunçayır station, transfer to the M4 Ünalın metro line, and get off at Maltepe station to continue on the same route.



R A N S P O R T
A T I O N



SECTION
PRESIDENTS
MEETING
MALTEPE



TRANSPORTATION



For those arriving from Sabiha Gökçen by plane

you can take the **Sabiha Gökçen-Kadıköy metro (M4)** and get off at **Maltepe station** after boarding at Sabiha Gökçen Station. From there, you can either take our university's shuttle service from exit 3 or use bus stops **KM43 or KM44, KM45 (not in weekend)** to reach the school in approximately 30-40 minutes.

If you prefer taking a taxi, it would cost around **160₺**, and you can reach the campus in **about 15 minutes by taxi**.

For those arriving by train

You can get off at **Süreyyapaşa station** via Marmaray and reach the campus in approximately **20 minutes by taxi**, costing around **220₺**.



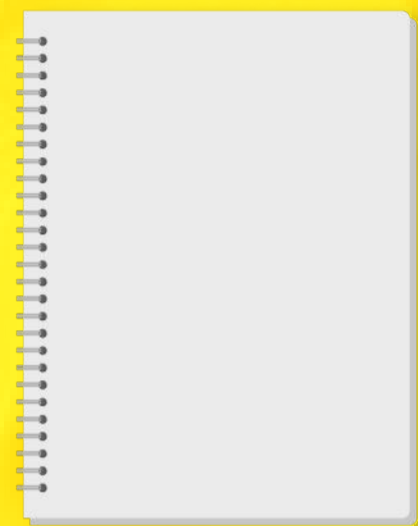
R A N S P O R T
A T I O N



WELCOME PACK



Bag



Agenda



Badge



Pencil

SUPRISES



W E L C O M E
P A C K



SECTION
PRESIDENTS
MEETING
MALTEPE



EMERGENCY CONTACT



Damla Yorulmaz
Head of OC
+90 506 873 28 06
@demria



Ceren Dilber
Vice Head of OC
+90 553 980 83 78
@cerenddl



Mert Çelikaşlan
Head of PR
+90 544 450 7232
@mertcelikasln

mail: esnmu@esnturkey.org

E M E R G E N C Y
C O N T A C T